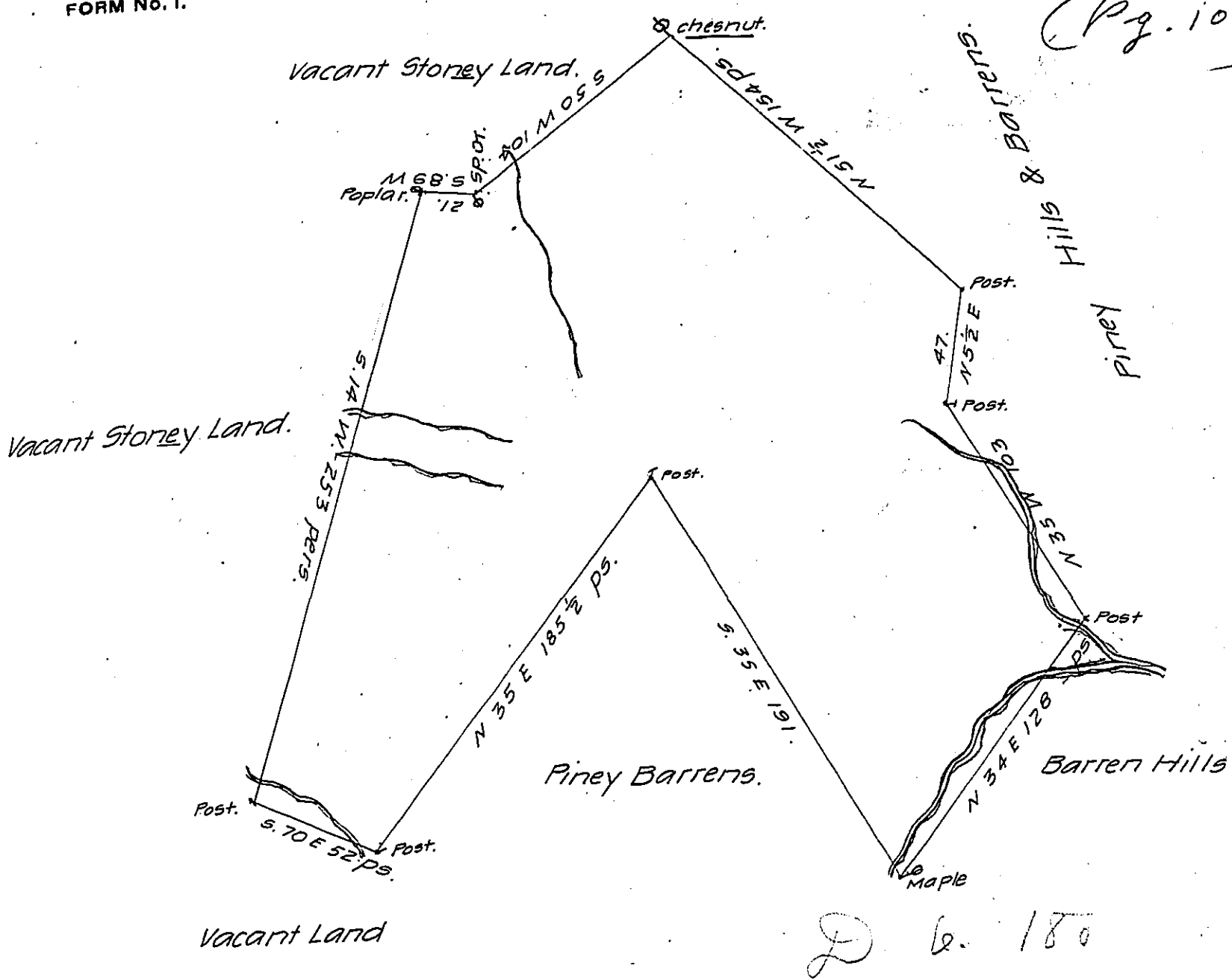


(Pg. 106)



A Draught of a Tract of Land situate on a small Branch run-  
ning out of the East Gap of Sideling Hill in the County of Cumber-  
land containing Three hundred and forty six acres and a quar-  
ter and the usual allowance of six acres P. Ct. for Roads & Ca. Sur-  
veyed for Francis Manny Junr in pursuance of an order dated the  
29<sup>th</sup> day of April 1767 and numbered 3553.

R. Richard Tea Depy Surveyr

To John Lukens Esqr. Surveyr Genl

IN TESTIMONY that the above is a copy of the original remaining on file in  
the Department of Internal Affairs of Pennsylvania, made  
conformably to an Act of Assembly approved the 16th day of  
February, 1833, I have hereunto set my Hand and caused  
the Seal of said Department to be affixed at Harrisburg,  
this thirty-first day of July 1906.

*Isaac D. Brown*  
Secretary of Internal Affairs.